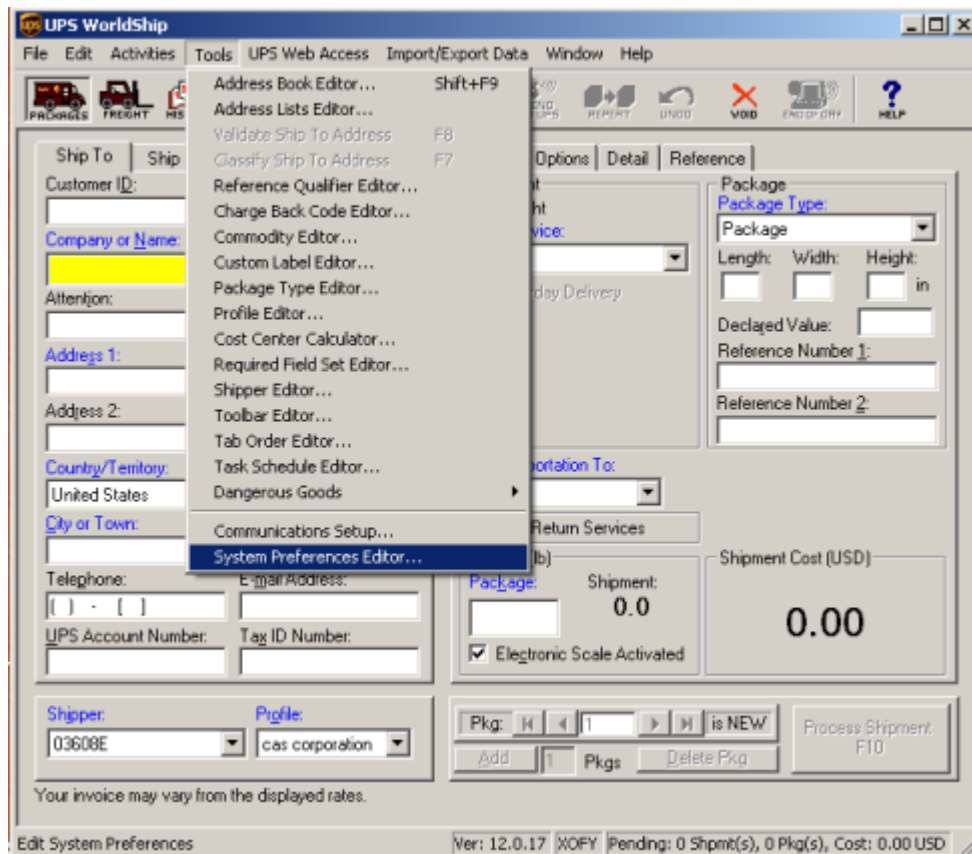
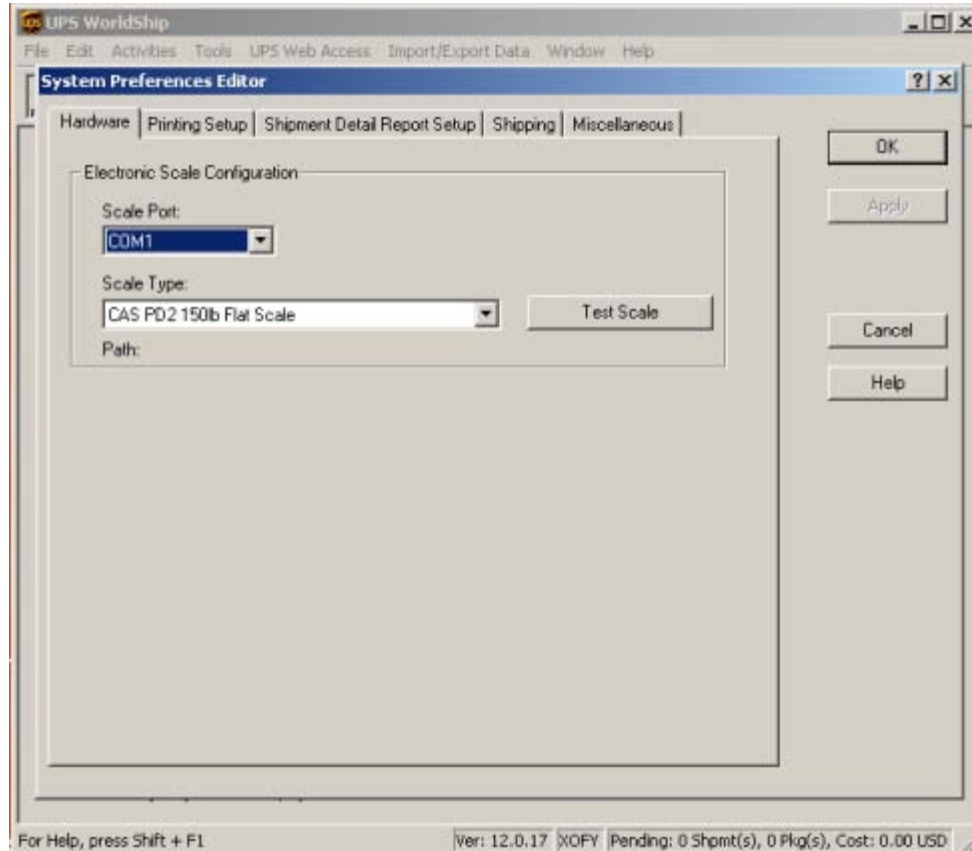


3. Click File ➔ Save. Close all the programs and open UPS Worldship. In UPS Worldship click on Tools and select System Preferences Editor.



4. In System Preferences Editor, under the Hardware tab, select the COM port where the scale is connected. For Scale Type, select CAS PDII from the drop down menu. Make sure the PDII is set to type 4 as per the PDII owner's manual. With the scale connected to the computer, put a weight on the scale and click on test scale. Click apply and OK.



6. The PDII can now be used for your UPS shipping.